

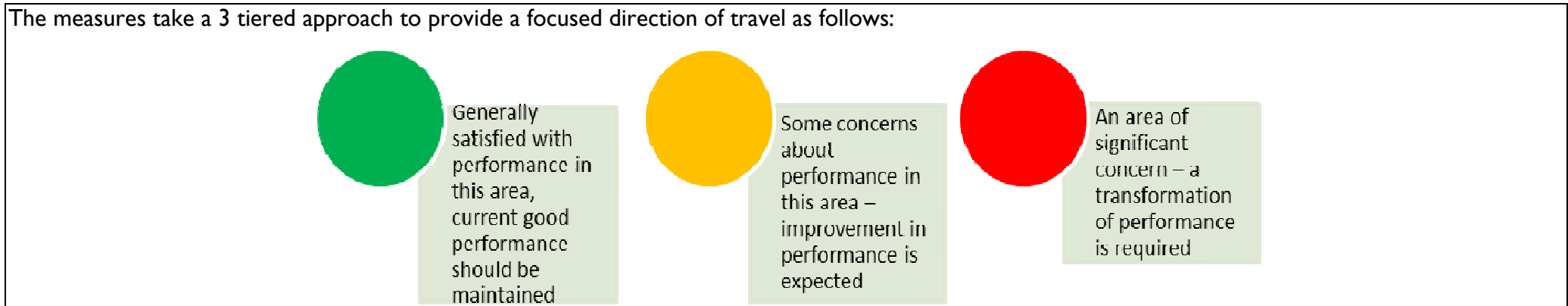
PERFORMANCE REPORT Safer Plymouth Partnership Friday 23 January 2015



LIST OF CONTENTS:

1. Exception Items
2. Current iQuanta Family Group Position
3. Performance Measures:
 - Closing the Gap in overall crime
 - Reduce Violence with Injury (excl DA)
 - Increase reporting of Domestic Abuse
 - Reduce Anti-Social behaviour
 - Reduce Serious Acquisitive crime (monitoring levels only)
 - Increase number of vulnerable victims of ASB supported by the ASB Victim Champion Service
 - % Satisfaction rate of those who engaged with the ASB Victim Champion Service
 - Increase number of racist, disablist, homophobic and faith incidents reported
 - Increase the % satisfied with outcome of reported racist, disablist, homophobic, faith & belief incidents
4. Performance on Strategic Assessment Recommendations

To demonstrate how we are performing, we have now adopted the Police and Crime Commissioner’s performance framework as illustrated below:



1. EXCEPTION ITEMS:

KEY RISKS AND PERFORMANCE ISSUES, BY EXCEPTION, INCLUDING ANY HIGHLIGHTED BY CHAIRS OF DELIVERY GROUPS

Closing the gap in overall crime between the 10 neighbourhoods with the highest crime rates and the city average per 1,000 population

SOME CONCERNS ABOUT PERFORMANCE IN THIS AREA: (within 15% of performance measures) - (2014/15 performance measure - "gap of not more than 76.2")

- For the period April to December 2014 we have seen an overall reduction of 0.5% (-72 crimes) in overall crime recorded compared to the same period last year.
- November saw the difference between the gap and target stay the same and we remain just above target and therefore remain amber. At the end of November the gap is 52.20 against a target gap of 50.8.

Reduce Violence with Injury (excl DA)

SOME CONCERNS ABOUT PERFORMANCE IN THIS AREA: (within 15% of performance measure) - (2014/15 performance measure - not more than 1705 crimes)

- For the period April to end of December 2014 we have seen an overall increase of 9% (+122 crimes) in Violence with Injury (excluding DA). This represents a worsening of the position at the end of quarter 2, when we were recording a 7% increase.

Increase Reporting of Domestic Violence (Crimes and Incidents)

SOME CONCERNS ABOUT PERFORMANCE IN THIS AREA: (within 15% of performance measure) - (2014/15 performance measure - record more than 7102 crimes)

- For the period April to December 2014 we have seen an overall reduction of 5% (-248 crimes) in overall crime recorded compared to the same period last year.
- The long term trend for domestic abuse is up, in part due to improved reporting.

Reduce the rate of Anti-Social Behaviour incidents

GENERALLY SATISFIED WITH PERFORMANCE - (2014/15 performance measure of not more than 10,298 Incidents)

- For the period April to end of December we have seen a reduction of 2% (-158) compared to the same period last year.
- Levels of ASB fell in December with 681 incidents recorded compared to 755 in November further strengthening our performance against target.

Reduce Serious Acquisitive Crime – MONITORING ONLY

SOME CONCERNS ABOUT PERFORMANCE IN THIS AREA

- For the period April to end of December we have seen an increase of 2.7% (+40) compared to the same period last year.
- The change to an increase is driven by very low crimes between September and December last year, reductions that we are not recording in 2014.

Increase the number of vulnerable victims of ASB supported by the ASB Victim Champion Service (target 300)

GENERALLY SATISFIED WITH PERFORMANCE - (2014/15 performance measure of 300 vulnerable victims seen)

- At the end of December 271 victims of ASB have been seen by the vulnerable victim service. Therefore we are on target to achieve the annual figure of 300 which would be an increase on the number of victims seen in 2013/14. The satisfaction rate of these vulnerable victims continues at 96%.
- Numbers seen have dropped significantly since July, however the service is due to promote itself again shortly, including a PCSO refresher course.

Satisfaction rate of those who engaged with the ASB Victim Champion Service (measure 90%)

GENERALLY SATISFIED WITH PERFORMANCE - (2014/15 performance measure of 90% satisfaction rate)

- At the end of September satisfaction rate is 96% against a target of 90%.

The number of racist, disablist, homophobic and faith incidents reported

GENERALLY SATISFIED WITH PERFORMANCE

(Plymouth City Council performance measure) At the end of November we are estimated to be on target having recorded 408 incidents, this compares to a figure of 390 for the same period in 2013-14. This means we are on course to exceed the target this year of 610.

The % satisfied with outcome of reported racist, disablist, homophobic, faith & belief incidents

GENERALLY SATISFIED WITH PERFORMANCE

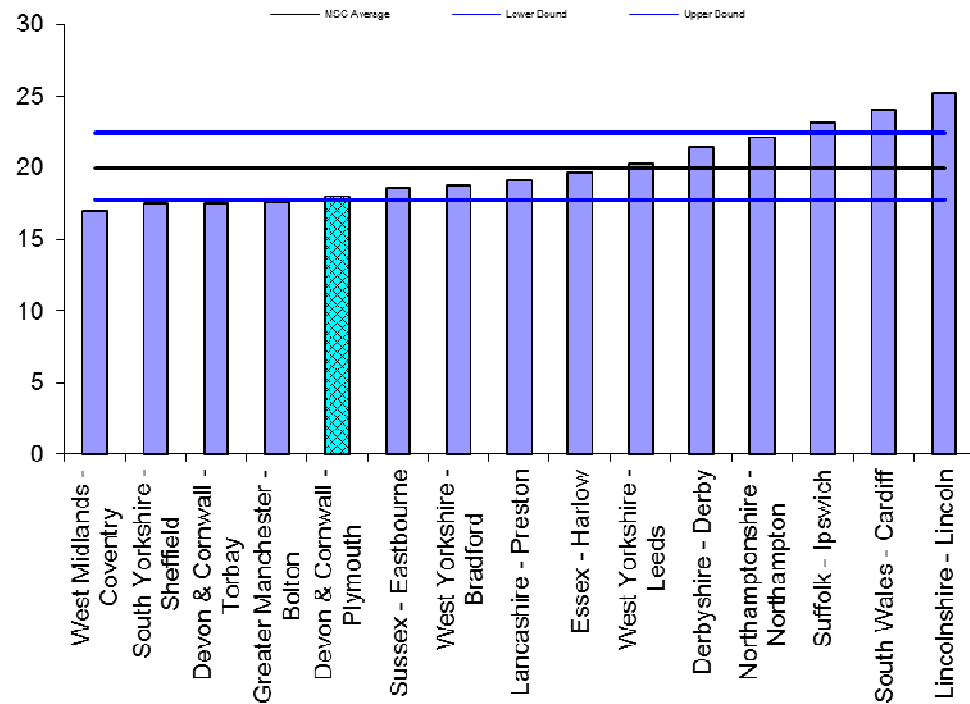
(Plymouth City Council performance measure) At the end of November we are on target with a satisfaction rate of 90%, this compares to a figure of 90% for the same period in 2013/14.

FINANCE & RESOURCES

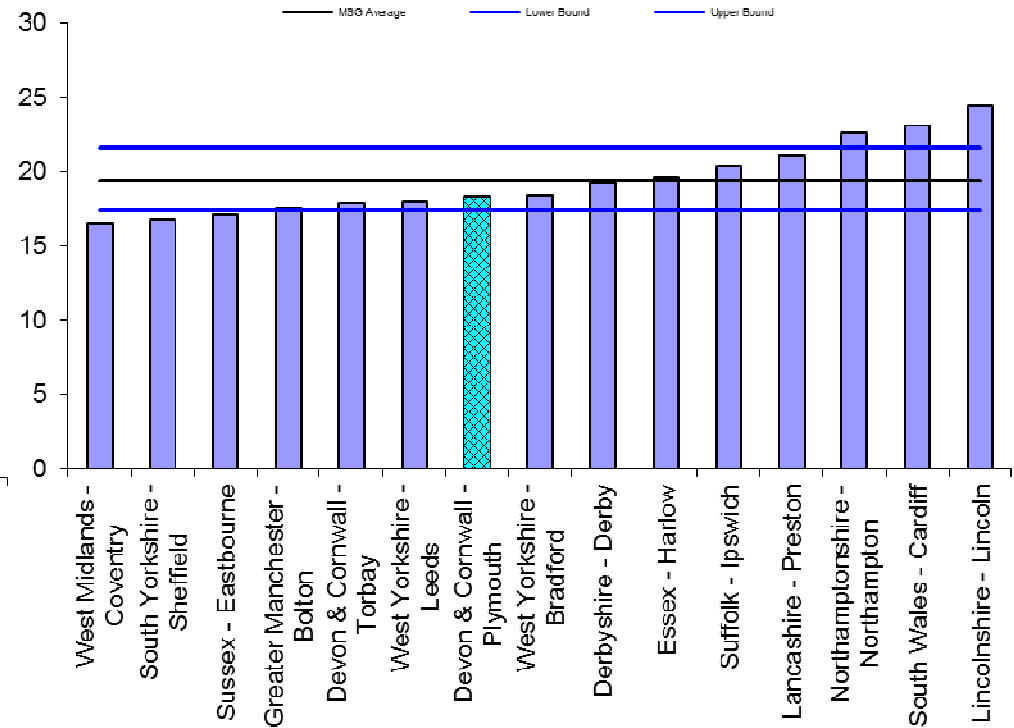
These will be items on the Agenda.

2. CURRENT OVERALL FAMILY GROUP POSITION:

iQuanta Barchart MSG - Crimes per 1000 Residents
All Crime 01 September 14 – 30 November 2014



iQuanta Barchart MSG - Crimes per 1000 Residents
All Crime 01 June 14 – 31 August 2014



The Home Office has recently reviewed it's iQuanta area groupings therefore our most similar family group has changed. Plymouth's position among these new comparator CSP areas has improved. At the end of August Plymouth was placed 7th of 15, this has improved to 5th place at the end of November.

3. PERFORMANCE MEASURES:

Closing the gap in overall crime between city rate and priority neighbourhoods

SOME CONCERNS ABOUT PERFORMANCE IN THIS AREA (within 15% of target) - (2014/15 Target gap of not more than 76.2)

	Annual Data			2014/15 Performance													
	11/12.	12/13.	13/14.	Apr	May	Jun	Jul	Aug									
Reduce the Gap between the worst 10 neighbourhoods & city average per 1000* (one month behind)																	
Gap 2014 - 2015			76.3	6.90	13.50	19.60	26.40	32.50	39.30	45.80	52.20						
Target Gap 14/15				6.35	12.7	19.05	25.4	31.75	38.1	44.45	50.8	57.15	63.5	69.85	76.2		
All crime 2013 - 2014 monthly				1458	1672	1628	1707	1712	1561	1533	1490	1501	1453	1483	1710		
All Crime Culmative 2013 - 2014				1458	3130	4758	6465	8177	9738	11271	12761	14262	15715	17198	18908		
All crime 2014 - 2015 monthly	21081	18,713	18,953	1611	1546	1627	1586	1508	1549	1571	1562	1630	0	0	0		
All Crime Culmative 2014 - 2015	21081	18,713	18,953	1611	3157	4784	6370	7878	9427	10998	12560	14190	14190	14190	14190		
% difference in All Crime 13/14 - 14/15				10.49%	0.86%	0.55%	-1.47%	-3.66%	-3.19%	-2.42%	-1.58%	-0.50%	-9.70%	-17.49%	-24.95%		

To reduce Violence with Injury (excluding DA)

SOME CONCERNS ABOUT PERFORMANCE IN THIS AREA (within 15% of target) - (2014/15 Target of not more than 1719 crimes)

	Annual Data			2014/15 Performance													
	11/12.	12/13.	13/14.	Apr	May	Jun	Jul	Aug									
Reduce Violence with Injury (Excluding DA)																	
Actual 2013 - 2014			1720	142	163	137	145	140	141	159	139	154	115	141	130		
Actual 2014 - 2015				151	156	167	156	163	135	176	163	175					
Target 14/15				141	304	441	586	726	867	1026	1165	1319	1434	1575	1705		
Cum Actuals 13/14			1720	142	305	442	587	727	868	1027	1166	1320	1435	1576	1706		
Cum Actuals 14/15				151	307	474	630	793	928	1104	1267	1442					
% difference in Actuals				6%	1%	7%	7%	9%	7%	7%	9%	9%					

To Increase Reporting of Domestic Violence. (Crimes and Incidents)

SOME CONCERNS ABOUT PERFORMANCE IN THIS AREA (within 15% of target) - (2014/15 Target gap of more than 7103 crimes)

	Annual Data			2014/15 Performance												
	11/12.	12/13.	13/14.	Apr	May	Jun	Jul	Aug	Sep	Oct	Nov	Dec	Jan	Feb	Mar	
Increase Reporting of Domestic Violence. (Crimes and Incidents)																
Actual 2013 - 2014			7103	487	574	585	713	679	573	597	542	640	544	533	635	
Actual 2014 - 2015				542	572	625	662	564	527	519	544	587				
Target 14/15				488	1062	1647	2360	3039	3612	4209	4751	5391	5935	6468	7103	
Cum Actuals 13/14				487	1061	1646	2359	3038	3611	4208	4750	5390	5934	6467	7102	
Cum Actuals 14/15				542	1114	1739	2401	2965	3492	4011	4555	5142				
% difference in Actuals				11%	5%	6%	2%	-2%	-3%	-5%	-4%	-5%	-100%	-100%	-100%	

To reduce the rate of Anti-Social Behaviour incidents

GENERALLY SATISFIED WITH PERFORMANCE - (2014/15 Target of not more than 10,298 Incidents)

	Annual Data			2014/15 Performance												
	11/12.	12/13.	13/14.	Apr	May	Jun	Jul	Aug	Sep	Oct	Nov	Dec	Jan	Feb	Mar	
Reduce Anti-social Behaviour incidents																
Actual 2013 - 2014	14342	10291	10299	769	934	967	1134	981	857	897	806	765	698	615	877	
Actual 2014 - 2015				808	882	1023	1056	915	982	850	755	681				
Target 14/15				768	1702	2669	3803	4784	5641	6538	7344	8109	8806	9421	10298	
Cum Actuals 13/14				769	1703	2670	3804	4785	5642	6539	7345	8110	8807	9422	10299	
Cum Actuals 14/15				808	1690	2713	3769	4684	5666	6516	7271	7952				
% difference in Actuals				5%	-1%	2%	-1%	-2%	0%	0%	-1%	-2%	-100%	-100%	-100%	

Increase the number of vulnerable victims of ASB supported by the ASB Victim Champion Service and Satisfaction rate of those who engaged with the ASB Victim Champion Service

GENERALLY SATISFIED WITH PERFORMANCE - (2014/15 performance measure of 300 vulnerable victims seen)

	Annual Data			2014/15 Performance												
	11/12.	12/13.	13/14.	Apr	May	Jun	Jul	Aug	Sep	Oct	Nov	Dec	Jan	Feb	Mar	
Increase the number of vulnerable victims of ASB supported by the ASB Victim Champion Service (target 300)																
Actual 2014 - 2015				54	60	38	51	18	21	9	16	4				
Target 14/15				25	50	75	100	125	150	175	200	225	250	275	300	
Cum Actuals 14/15				54	114	152	203	221	242	251	267	271				
Satisfaction rate of those who engaged with the ASB Victim Champion Service																
Actual 2014 - 2015						96%	94%	99%	96%							
Target 14/15				90%	90%	90%	90%	90%	90%	90%	90%	90%	90%	90%	90%	

To reduce Serious Acquisitive Crime

NO PERFORMANCE MEASURE BUT SOME CONCERNS ABOUT PERFORMANCE IN THIS AREA – MONITORING ONLY

	Annual Data			2014/15 Performance												
	11/12.	12/13.	13/14.	Apr	May	Jun	Jul	Aug	Sep	Oct	Nov	Dec	Jan	Feb	Mar	
Serious Acquisitive Crime																
Actual 2013 - 2014	2802	2244	1969	190	208	222	146	177	140	132	127	120	168	162	171	
Actual 2014 - 2015				179	155	182	139	162	198	154	170	163				
Cum Actuals 13/14				190	398	620	766	943	1083	1215	1342	1462	1630	1792	1963	
Cum Actuals 14/15				179	334	516	655	817	1015	1169	1339	1502				
% difference in Actuals				-5.8%	-16.1%	-16.8%	-14.5%	-13.4%	-6.3%	-3.8%	-0.2%	2.7%				

The number of racist, disablist, homophobic and faith incidents reported and The % satisfied with outcome of reported racist, disablist, homophobic, faith & belief incidents

GENERALLY SATISFIED WITH PERFORMANCE (2014/15 performance measure of more than 610 Incidents)
GENERALLY SATISFIED WITH PERFORMANCE (90% satisfaction rate)

	Annual Data			2014/15 Performance											
	11/12.	12/13.	13/14.	Apr	May	Jun	Jul	Aug	Sep	Oct	Nov	Dec	Jan	Feb	Mar
The number of racist, disablist, homophobic and faith incidents reported															
Cumulative average 13/14				51	106	144	192	247	300	347	390	444	496	551	603
Cumulative average 14/15		569	603	55	109	152	208	247	292	354	408				
Target required				51	102	152	203	254	305	356	407	457	508	559	610
The % satisfied with outcome of reported racist, disablist, homophobic, faith & belief incidents															
Cumulative average 13/14				88.23%	88.23%	89.12%	89.61%	89.44%	89.45%	89.28%	89.75%	88.82%	88.73%	88.95%	88.86%
Cumulative average 14/15		89%	89%	86%	89%	90%	90%	90%	90%	90%	90%				
Target average				90%	90%	90%	90%	90%	90%	90%	90%	90%	90%	90%	90%

4. Performance on Key Strategic Recommendations from the 2013/14 Strategic Assessment

The following are the agreed key strategic recommendations for the Safer Plymouth Partnership for 2013/14:

1. Agree the following as priorities for 2014; Violence with Injury (excluding Domestic Abuse), Domestic Abuse, Anti-Social Behaviour, Hate Crime, Sexual Violence Reducing Re-offending and Serious Acquisitive Crime.	
2. Utilise partnership intelligence to monitor levels of Violence without Injury and Acquisitive crime (including Shoplifting), and respond to the increase in these crime types.	
3. A solution is found to securing/ mainstreaming activities that support the most vulnerable victims of anti-social behaviour i.e. Vulnerable Victims Champion	
4. All 'indicated' partner contributions need to be confirmed/ secured in order to deliver all elements of the enhanced/ increase Domestic Abuse service provision. Failure to do so will negatively impact on the service specification and result in a reduced service.	
5. Funding for continuation of SARC services need to be confirmed/ secured in order to deliver all elements of the current service and to increase the provision for children.	
6. Support and deliver the outcomes in Plymouth from Alcohol Strategy and Commissioning Plan given the impact of alcohol on each of the priorities outlined above.	
7. Continue with a proportionate programme of work to prevent violent extremism.	
8. Support the activities and priorities in the "Early Intervention and Prevention Strategy 2012-2015 For Children, Young People and Families" particularly those interventions that will have a positive effect in preventing and protecting young people from becoming involved in crime and risk-taking behaviour.	
9. Monitor the local impact of Welfare Reform and ensure that partners' plans and interventions are supported. That minimise the impact on individuals and families that may result in/lead to increases in criminal activity, for example serious acquisitive crime, domestic abuse, violent crime and substance misuse.	
10. Maintain the integrated Police/Probation model by retaining the IOM team for prolific re-offenders and establishing a co-located Multi Agency Public Protection Team	
11. Ensure that Safer Plymouth responds to the Police and Crime Commissioner's process for a 'self-assessment' in a way that ensures and maintains the offer to Plymouth for 3-year funding as outlined in the Police and Crime Commissioner's Commissioning Plan. To also maintain a strong relationship with the Police and Crime Commissioner that continues to ensure the prioritisation of Plymouth regionally.	
12. Continue to play an active role in supporting the work of the Devon and Cornwall Police and Crime Panel (currently hosted by Plymouth) and support Plymouth City Council in reaching a decision by March 2014 as to whether to continue to host, and in light of further funding announcements from the Home Office.	

